

EVERYDAY

English



ENGLISH UNLIMITED

SYDNEY · BRISBANE · MELBOURNE / EU.EDU.AU



Contents

- 01 What is Everyday English?
- 02 What makes Everyday English different from other teaching methods?
- 04 Everyday English levels
- 06 Personalise your learning experience



What is Everyday English?

Everyday English is a teaching method which was established in response to a student's critical need for a course that combines language based education and enhances cultural experience in Australia.

We teach students the must-know, everyday language they are going to hear and experience, outside of school. Coming to a new country and learning a new language is not easy and that is why Everyday English creates a class environment that encourages and stimulates students to actively participate in the real world.

The Everyday English method enhances students' learning experience, giving them the confidence to achieve their everyday goals. Our students learn how to speak with confidence, interact with the community and make the most of their experience in Australia.



What makes Everyday English different from other teaching methods?



Exclusive Coursebook

- Bridge the gap between the real world and the classroom
- Only available for English Unlimited students
- More Australian content than other coursebooks
- Everyday English vocabulary
- Engaging activities
- Extensive exposure to English in use
- Written by Dr Ivan Kumar (Academic Manager)



Accent Coaching

- Weekly Accent Coaching workshop created by English Unlimited's own speech pathologist, Tristan Jones, and Dr Ivan Kumar
- Students reduce their accent in 12 weeks with weekly progress analysis done by our trained accent coaches



Video/Audio speech analysis

- Every week teachers will run a speech analysis workshop
- Students can see their weekly progress
- Functional language training
- Confidence building activities



Personalised lessons

- Workshops according to the student's level
- Each macro skill taught in a separate workshop every week
- Students are tested according to their level and a personalised timetable is created for each student every week
- Workshops tailored to the needs of students



Real world projects and activities

- Every week students will be given one real world activity
- These activities include presentations, blogging, creating prototypes, podcasting etc
- These activities help students connect with the world beyond the classroom in a modern and interactive way
- Research has shown that students who engage with the language they are learning are much more likely to be confident and fluent in the language

Everyday English levels

Level

3

PRE-INTERMEDIATE

Personalised Pronunciation class
Exclusive Everyday English reader

Level

4

INTERMEDIATE

Personalised Pronunciation class
Personalised lessons
Video-making and speech analysis
Exclusive Everyday English workbook
Exclusive Everyday English reader

Level

5

INTERMEDIATE PLUS

Personalised Pronunciation class
Personalised lessons
Video-making and speech analysis
Exclusive Everyday English workbook
Exclusive Everyday English reader

Level

6

UPPER INTERMEDIATE

Personalised Pronunciation class
Personalised lessons
Video-making and speech analysis
Exclusive Everyday English reader

Level

7

ADVANCED

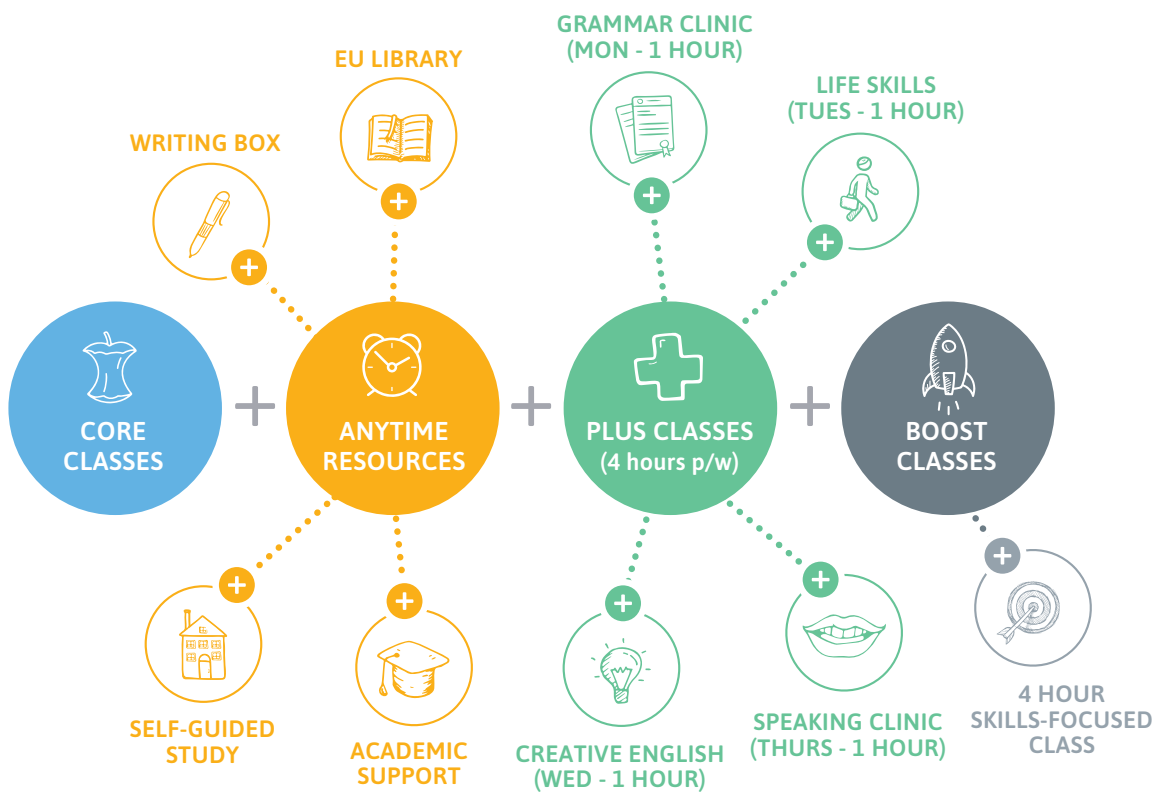
Personalised Pronunciation class
Video-making and speech analysis
Exclusive Everyday English reader








Personalise your learning experience!




Jenny knows the major grammatical forms. She usually scores well in grammar tests and her writing skills are good too. However, Jenny is not a confident speaker and feels nervous to talk to native speakers. She usually doesn't understand the Australian accent. We have personalised Jenny's study plan; she will study in a lower speaking and listening class to increase her confidence and fluency but will be in a higher grammar, reading and writing class.

Sample timetable*

TIME	MONDAY	TUESDAY	WEDNESDAY	THURSDAY	FRIDAY
SKILLS LEVEL 9:00AM - 11:00AM	Speaking + listening 4 (inter)	Interactive grammar 6 (upper)	Interactive grammar 6 (upper)	Reading + Writing 5 (inter +)	BOOST CLASS (9:00AM - 1:30PM)
OVERALL LEVEL 11:15AM - 12:45PM	Topic Introduction	Vocab + speaking	Aussie Reading	Module review	
ACCENT FOCUS 1:15PM - 2:45PM	Accent Coaching (B)	Speaking + video-making (B)	Student project/ presentation	Interactive activity	
3:00PM - 4:00PM	PLUS CLASS Grammar Clinic	PLUS CLASS Life Skills	PLUS CLASS Creative English	PLUS CLASS Speaking clinic	

Lucas likes to communicate but makes a number of grammatical mistakes. He is able to understand native speakers but often makes grammatical mistakes while speaking, emailing and messaging. We have personalised Lucas's study plan; he will be in a lower grammar class to improve his basic grammar skills but will be in a higher speaking and listening class.

Sample timetable*

TIME	MONDAY	TUESDAY	WEDNESDAY	THURSDAY	FRIDAY
SKILLS LEVEL 9:00AM - 11:00AM	Speaking + listening 5 (inter +)	Interactive grammar 4 (inter)	Interactive grammar 4 (inter)	Reading + Writing 5 (inter +)	BOOST CLASS (9:00AM - 1:30PM)
OVERALL LEVEL 11:15AM - 12:45PM	Topic Introduction	Vocab + speaking	Aussie Reading	Module review	
ACCENT FOCUS 1:15PM - 2:45PM	Accent Coaching (A)	Speaking + video-making (A)	Student project/ presentation	Interactive activity	
3:00PM - 4:00PM	PLUS CLASS Grammar Clinic	PLUS CLASS Life Skills	PLUS CLASS Creative English	PLUS CLASS Speaking clinic	

*personalised timetable for Intermediate, Intermediate + and Upper Intermediate



ENGLISH UNLIMITED

**SPEAK
WITH
CONFIDENCE.**





Personalised Skills level

9:00am – 11:00am

- Each student's learning needs are different
- Every week students are given a personalised timetable according to their skills level
- The personalised skills class is from 9:00 to 11:00
- Some students have different skill levels. For example an Intermediate student with strong listening skills will go to listening level 5 (Intermediate Plus) on Monday but lower grammar skills will go to level 4 (Intermediate) on Tuesday and Wednesday
- Each student will study according to their level in each individual skill

Overall level

11:15am – 12:45pm

- From 11:15 to 12:45 a student studies at their overall level
- We have an additional level, Intermediate Plus for students that are stronger than the average intermediate students
- This session focuses on students real life skills, connecting them to the real world and giving them confidence to communicate in everyday life

Personalised accent coaching

1:15pm – 2:45pm

- Our trained accent coaches conduct the accent reduction workshop every Monday and Tuesday from 1:15 to 2:45
- Students are in either workshop A or workshop B depending on the pronunciation problems.
- On the second day students attend a video analysis workshop where the speech patterns are analysed by our trained accent coaches with the help of voice recognition technology



EVERYDAY *English*

**SPEAK
WITH
CONFIDENCE.**



ENGLISH UNLIMITED

SYDNEY +61 2 9251 7000 . **BRISBANE** +61 7 3003 0088 . **MELBOURNE** +61 3 8689 5500

EU.EDU.AU

BRISBANE CRICOS PROVIDER: ENGLISH UNLIMITED BRISBANE PTY LTD 03296K | ABN 11 144 733 188
MELBOURNE CRICOS PROVIDER: YOUNG RABBIT PTY LTD 01331F | ABN 28 003 381 182 | TRADING AS ENGLISH UNLIMITED MELBOURNE
SYDNEY CRICOS PROVIDER: YOUNG RABBIT PTY LTD 01331F | ABN 28 003 381 182 | TRADING AS ENGLISH UNLIMITED SYDNEY

ENGLISH UNLIMITED EVERYDAY ENGLISH TEACHING METHOD GUIDE 16 JAN 2019 V1.8R