

Pacific

ENGLISH STUDY

Better English. Better Future.

CRICOS Provider: 03215E

Address: Level 2, 17 Orchid Avenue.
Surfers Paradise. Gold Coast.
Queensland. Australia.

Tel: +61 (0)7 5527 5306

Email: info@pacificenglishstudy.com

Whatsapp: +61 406 070 816





“ IT’S ALL ABOUT YOU AT PACIFIC ENGLISH STUDY

Come to Australia for the high quality of education, the exciting activities, beautiful scenery and excellent quality of life.

Study the English language at Pacific English Study on the sunny Gold Coast.

Walk to school along the beach in the morning. Enjoy lunch looking at the warm waters of our world famous Surfers Paradise Beach.

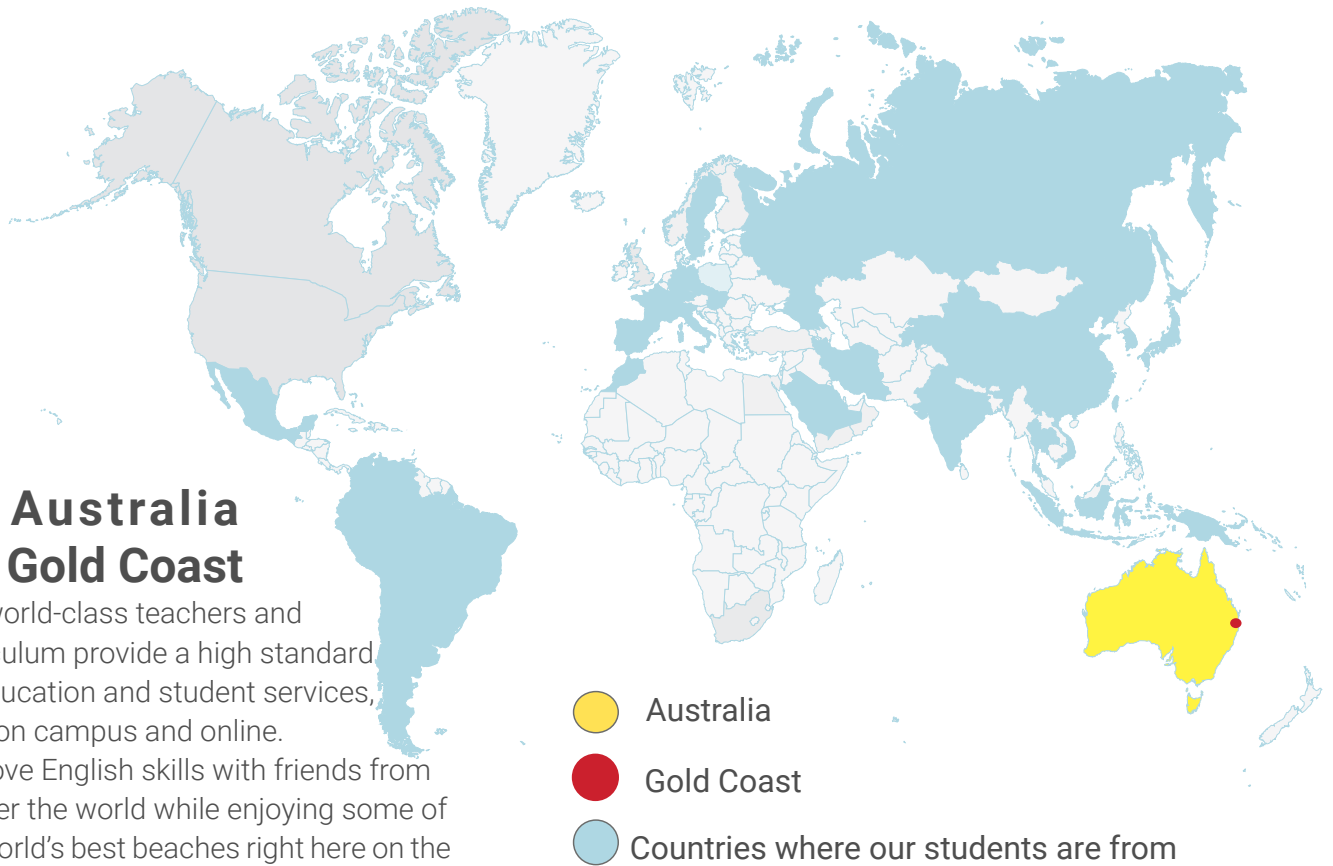
Join in our fun weekly after school activities.

All of this and only a few metres from your classroom.

Since 2008, more than 7000 international students from around the globe enrolled in our flexible and affordable English courses from our Gold Coast Campus in sunny Queensland, Australia.

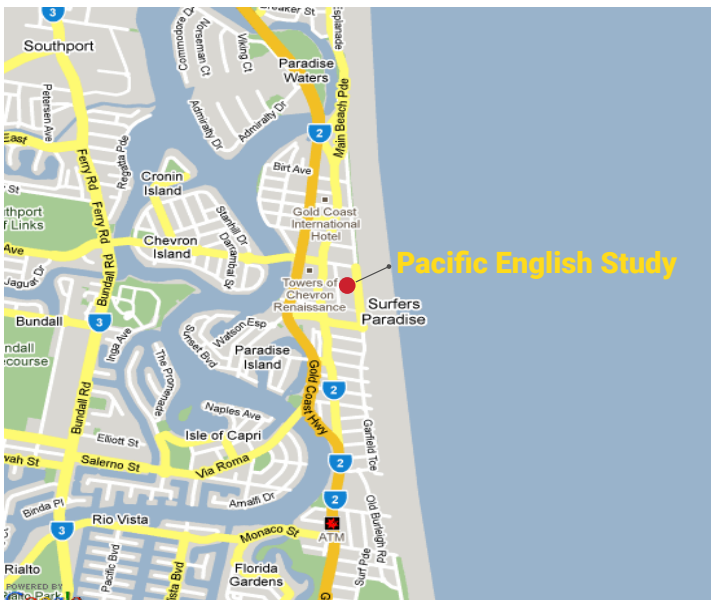
Australia Gold Coast

Our world-class teachers and curriculum provide a high standard of education and student services, both on campus and online. Improve English skills with friends from all over the world while enjoying some of the world's best beaches right here on the Gold Coast.

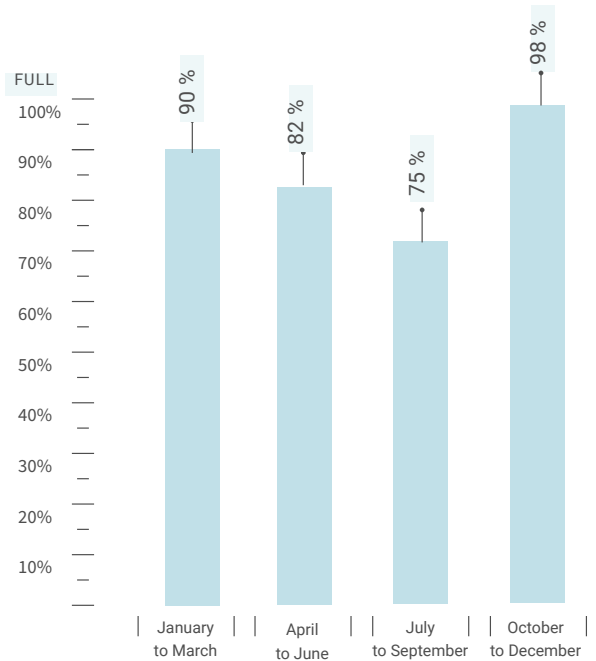



BEST LOCATION

We are in the city centre of Surfers Paradise on the Gold Coast. Surrounded by shops, cafes, and restaurants.



STUDENT NUMBER CAPACITY



 During peak season, please apply as early as possible to secure a place.

PERSONALISED LEARNING

Our school is small enough so that you don't feel like you're just another face in the crowd, and yet we are big enough to provide you with the best teaching available.

Remember that, when you enrol with us, you become part of our Pacific Family.



WORLD-CLASS TEACHERS



Our teachers are university qualified and among the best industry experienced language teachers in the business. With over 100 years of combined teaching experience, our teaching staff come from all over the world.

Most of our teaching staff speak more than one language, so they understand the challenges you will face learning English. When you join our Pacific English family, you'll receive the highest quality of teaching, delivered by the best qualified teachers, in the most beautiful location in Australia.

JOB SUPPORT



We also have a student liaison officer at school helping our students to prepare for job applications and interviews.

We give you information about how to get a job, contact employers and understand our workplace rights.

Pacific English Study is a great school with very helpful teachers. The study environment is perfect for learning English and there are students from all over the World! It is also conveniently located in the heart of Surfers Paradise. In my experience they have always helped me when I have needed it. I am very grateful to them.

Sonia Lopez Rodriguez

AFFORDABLE FEES

We know it can be difficult juggling work and study. That's why we try very hard to keep our prices as low as possible, so you can make the most of your time with us.

All our course prices are highly competitive and we offer payment plans for our Australia on-shore students which helps to reduce our international students' financial stress when they are renewing their student visas.

VARIETY OF COURSES



We offer Australian Government registered General English courses across five levels which include,

- Elementary A2,
- Pre-Intermediate B1,
- Intermediate B1+,
- Upper Intermediate B2,
- Advanced C1.

Once you have graduated your course, you'll receive a Certificate of Completion and a Transcript of Achievement. You may also choose to study for the **IELTS** or one of our many **Cambridge courses**.

All assessments are completed online and are validated from experts at Cambridge Assessment English.

I had a lovely time in this school.

I made a lot of friends there and I will keep in touch with all the friends that I met at the school.

The teachers were so nice.

I was so excited to go to school and learn more and more.

I will recommend this school for everyone.

All the time that I was in this school will be in my memory for all my life.

Marcella Meneghetti Duarte



Very good professionals, attentive and helpful. Staff and teachers are very patient. They made me enjoy my study time. Good choice of school, highly recommended.

Yumiko Sato

COURSES

GENERAL ENGLISH

Class level: Elementary, Pre-Intermediate, Intermediate, Upper-Intermediate and Advanced.

In-take date: Every week. **Course Length:** 1 to 84 weeks

Class size: Average of 15 students per class.

General English Course (CRICOS Code: 071778F)

Our most popular course offering a balanced programme for students who want to improve their daily English skills in all areas. High energy lessons with lots of speaking practice to increase students' confidence in the real world. 20 hours per week face-to-face class.

Sample Class Timetable

	Monday	Tuesday	Wednesday	Thursday
8:30am to 12:10pm	GRAMMAR Second conditional. Third conditional. VOCABULARY Sport; Adjectives and prepositions. Expressions with do, make and take Wordpower: Easily confused words.	PRONUNCIATION Sentence stress: would, and have. Sounding sure and unsure. LISTENING Conversation: trying new sports. Making a marriage proposal. Monologue: Volunteering	READING Article: Searching for serendipity. A web page about volunteering. Email giving advice WRITING An article about a form of entertainment.	WRITING Advising a course of action. Writing an email giving advice. WEEKLY ONLINE PROGRESS TEST Speaking. Grammar. Listening. Writing.
1pm to 2:30pm	CONVERSATION CLASS Taking new opportunities. Volunteering	CONVERSATION CLASS A past event that made life better.	CONVERSATION CLASS Talking about possible problems. Reassuring someone.	CONVERSATION CLASS Changing the subject.

General English Part-Time (Available to non-student visa holders)

Timetable: Monday to Thursday 8:30am to 12:10pm. 14 hours per week

General English Course- Condensed (CRICOS Code: 080693C)

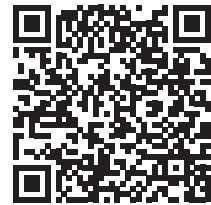
This condensed course allows students to study General English for a few days a week and still have enough free time to work and play. This course is perfect for students with part time jobs or busy lives. 20 hours per week face-to-face class. You can choose two timetables:

Sample Class Timetable for Day Class

	Day 1	Day 2	Day 3
7:40am to 8:45am	Homework checking, correction, feedback and questions.		
8:45am to 10:00am	English lesson	English lesson	8:00am to 12:00pm or 12:30pm to 4:30pm
10:10am to 12:00pm	English lesson	English lesson	
12:30am to 2:40pm	English lesson	English lesson	English lesson
2:50pm to 4:30pm	English lesson	English lesson	Free Time

Sample Class Timetable for Evening Class

	Monday	Tuesday	Wednesday	Thursday	Friday
4:30pm to 7:00pm	English lesson	English lesson	English lesson	English lesson	Free time
7:15pm to 9:30pm	English lesson	English lesson	English lesson	English lesson	Free time



COURSES

IELTS Exam Preparation (CRICOS Code: 0101559)

Entry level: Intermediate B1 +

In-take date: Every week. **Course length:** 1 to 64 weeks

Class size: Average of 15 students per class.

We love IELTS because it is the gateway to a whole world of exciting and life changing opportunities, whether it be higher learning, immigration purposes or employment options.

Immerse yourself in the one and only, specially developed course that brings you up to speed with the most up-to-date teaching system so that you can succeed in your IELTS exam.

20 hours per week face-to-face class.

Class Timetable:

Choose one of our two timetables:

Timetable 1: Day class (Two and half days per week.)

Day 1 and Day 2: 7:40am to 4:30pm, Day 3: 4 hours 8am to 12pm or 12:30pm to 4:30pm.

Timetable 2: Evening class: Monday to Thursday 4:30pm to 9:30pm

English Plus Surfing

Part-Time (Available to non-student visa holders)

Join one of our most popular courses among our working holiday students.

- 17 hours of English lessons and 4 hours of surfing lessons each week.
- Surfing lessons are usually on Wednesday and Thursday afternoon.
- Free transport between school and the surfing school.
- Free surfboards and wetsuits are provided.



English Class Level:

Elementary, Pre-Intermediate, Intermediate, Upper-Intermediate and Advanced.

In-take date:

Every week.

Course Length:

1 to 8 weeks

English class size:

Average of 15 students per class.

Surfing class size:

Average of 12 students per session.

Sample Class Timetable

	Monday	Tuesday	Wednesday	Thursday
8:30am to 12:10pm	English Lesson	English Lesson	English Lesson	English Lesson
1pm to 2:30pm	English Lesson	12:45PM TO 3:30PM Surfing lessons *Include travel time	12:45PM TO 3:30PM Surfing lessons *Include travel time	English Lesson



COURSES

Cambridge Exam Preparation

- We use the most current Cambridge course book, along with in-house materials that are designed personally for you.
- Learn in a class of different nationalities from all over the world.
- Your listening, writing, reading, and speaking skills are tested and marked every week.
- It is not just about learning to take the test, you also learn the language skills necessary to confidently communicate in professional and academic environments, whether in employment or in an education institution.
- Connect with Cambridge Assessment English for practice and timed mock tests; online and paper-based tests and receive immediate scoring and feedback.
- Your teacher gives you concise feedback with a clear individual improvement program designed especially for you.
- Receive a personal code to access the Cambridge Assessment English website for online practice and timed tests.

We prepare for

Cambridge

English Qualifications™



In-take date for the open course: Every week. **Course length:** 1 to 24 weeks

In-take date for the closed course: Please check our course guide.

Class size: Average of 12 students per class.

B2 First (FCE) CRICOS CODE: 102773F

Class Timetable:

20 hours per week face-to-face class.

Day 1 and Day 2: 7:40am to 4:30pm. Day 3: 8am to 12:00pm.

Entry level: Intermediate B1+

C1 Advanced (CAE) CRICOS CODE: 0100905

Class Timetable:

20 hours per week face-to-face class

Day 1 and Day 2: 7:40am to 4:30pm. Day 3: 8am to 12pm.

Entry level: Upper- intermediate

In-take date for the open course: Every week. **Course length:** 1 to 24 weeks

In-take date for the closed course: Please download our course guide.

Class size: Average of 12 students per class.

We are an official Cambridge Pre-testing language school which means you may have the opportunity to sit an official Cambridge Pre-test paper marked and graded directly from Cambridge Assessment English.



info@pacificenglishstudy.com



Download our course guide from the website for more details.

COURSES

Pearson Test Preparation

Our popular PTE Exam Preparation Course is perfect for you if you are looking for an artificial intelligence scoring computer-based test that measures your English language skills. We know that's a lot to understand, but in short, it means that the computer scores your English language skills the way a human marker would score you. Easy!

CRICOS CODE: 102972K

Class Timetable: (20 hours per week)

Monday to Thursday

4:30pm to 9:30pm

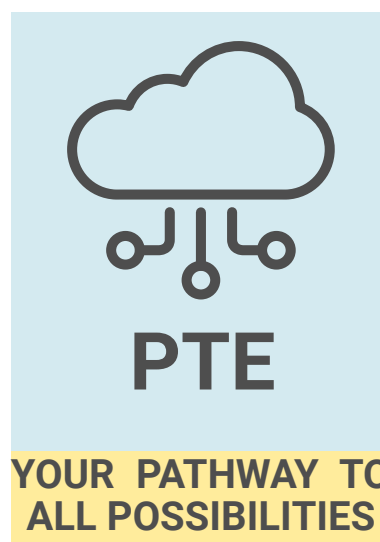
Entry level: Intermediate

In-take date for the open course: Every week.

Course length : 14 weeks (12 weeks study plus 2 weeks holiday)

Class size: Average of 12 students per class.

Keep in mind that you will repeat the textbook after the first 12 weeks of study.



Download our course guide from the website for more details.



Sample Class Timetable for Evening Class

	Monday	Tuesday	Wednesday	Thursday	Friday
4:30pm to 7:00pm	PTE lesson	PTE lesson	PTE lesson	PTE lesson	Free time
7:15pm to 9:30pm	PTE lesson	PTE lesson	PTE lesson	PTE lesson	Free time

Here at Pacific English Study, we will make sure you get the score you need. That's our promise to you! Our teachers use the most up-to-date teaching methods and they really care about you. We have small, intimate classes with students of all ages from all over the world. That's what makes Pacific English Study different from all the rest.

What else is great about the PTE exam? Well, it is accepted for study applications by thousands of academic programs around the world. It is also approved for all UK, Australian and New Zealand student visa and migration applications.

Have a look at the webpages below and we are sure you will find a visa that works for you.

Reference: [Pearson/PTE](#)

[Department of Home Affairs](#)



Connect with us on Instagram: @pacificenglishstudy #purepacificgc

300 days a year of sunshine, a tropical climate, 8 to 9 hours of sunshine a day and the average maximum and minimum temperatures of 25.3C and 15.7C are enough for Queensland to be called the Sunshine State.

There are many exciting events to enjoy when you are not studying. The Gold Coast has many international events such as surfing, car racing, music festivals, marathon running, as well as a world class casino, theme parks, animal parks, shopping malls and exciting nightlife.



**HERE IS
A LITTLE MORE
ABOUT US... ..**

- We are 50 metres from Surfers Paradise Beach, cafe and the shopping centre.
- We have 12 light-filled classrooms that enjoy year-round ocean breezes.
- We have two (2) campuses that have direct views to Surfers Paradise Beach.
- We have a modern kitchen facility for you to use.
- Lots of extra school activities!
- Teachers who really know what they are doing.

ACCOMMODATION

Homestay

Pacific English Study can help students to arrange host families to suit their needs. Host families are carefully selected for their kind and caring personalities and their genuine desire and willingness to open their homes and share their family lives and customs with our students.

Meal Plan:

Monday to Friday: Breakfast and dinner;

Saturday and Sunday: Breakfast, lunch and dinner.

Minimum 4 weeks stay.



Demi Pair Program

Demi Pair Program allows you to live with an Australian family and provide 15 hours of work per week in exchange for your accommodation and meals.

You must provide assistance to the parents, sharing housework and child minding duties as required. You are required to have a reasonable level of English so you can adequately communicate with your family. You must apply for and be granted a Blue Card and it is desirable (but not essential) that you have an international driver's licence.

Demi Pair Plus Program allows students to receive an allowance of \$60 per week. Students' English level must be Intermediate B1+. Two (2) babysitting references must be provided and the student must have a valid driver's licence.

Meal Plan: Breakfast, Lunch and dinner;

Minimum 12 weeks stay.



Airport Transfer Service

Students who use our homestay service must use the school's airport transfer service.

Transfer is between the Gold Coast/Brisbane Airports and the Gold Coast residential address.



Please check the Fee List for prices.

ENROLMENT PROCEDURE

01

Choose a course of study and decide when you want to start classes.

Refer to the website providing information for Education Services for Overseas Students on: <https://www.studyinaustralia.gov.au/english/australian-education/education-system/esos-act>

02

Read the Student Agreement, and then complete and sign the Application Form.

Email the Application Form to Pacific English Study :

info@pacificenglishstudy.com

When we receive your Application Form, we will send you a:

- (1) Letter of Offer,
- (2) Enrolment Acceptance, and
- (3) Invoice for Payment.

03

Please forward your fees in full and sign the Enrolment Acceptance letter and email it back to us.

Pacific will then send the appropriate confirmation documents (including the COE if you are applying for a student visa). If you are applying for a student visa, you must show these documents at the Australian Embassy when you apply for your visa.

Pacific
ENGLISH STUDY

School Address

17 Orchid Avenue
Surfers Paradise
Gold Coast 4217
Australia

**For more information,
please contact us:**

www.pacificenglishstudy.com

Email: info@pacificenglishstudy.com

Whatsapp: +61 406 070 816

Office: +61(0)7 5527 5306



You Tube



Information in this brochure includes courses, schedules and service availabilities may be subject to change without individual notification. Please check our website for latest information and updates.